



MATERIALS

Bernat® Blanket™ (10.5 oz/300 g; 220 yds/201 m)

Contrast A Silver Steel (10001) **3 balls or 522 yds/478 m**

Contrast B Moss (10803) **3 balls or 487 yds/445 m**

Size U.S. 11 (8 mm) circular knitting needle 40" [101.5 cm] long **or**
size needed to obtain gauge.

 KNIT | SKILL LEVEL: **EASY**

ABBREVIATIONS

Approx = Approximately

Beg = Beginning

Dec = Decrease(ing)

K = Knit

Inc = Increase(ing)

P = Purl

Pat = Pattern

Rep = Repeat

RS = Right side

Sl1Pwyib = Slip next stitch
purl-wise with yarn in back

Sl1Pwyif = Slip next stitch
purl-wise with yarn in front

St(s) = Stitch(es)

WS = Wrong side

MEASUREMENTS

Approx 52½ x 62" [133.5 x
157.5 cm].

GAUGE

8 sts and 11 rows = 4" [10 cm] in
stocking stitch.

INSTRUCTIONS

Note: Carry color not in use
loosely up side of work.

With B, cast on 93 sts. **Do not** join.
Working back and forth across
needle in rows, knit 15 rows
(garter st), noting 1st row is WS.

1st row: (RS). With B, K1.
*Sl1Pwyib. K5. Rep from * to last
2 sts. Sl1yb. K1.

2nd row: With B, K1. Sl1Pwyif.
*K2. K1, wrapping yarn around
needle 5 times. K2. Sl1Pwyif. Rep
from * to last st. K1.

3rd row: With A, K1. *K3.
Sl1Pwyib, dropping extra yarn
wraps. K2. Rep from * to last 2 sts.
K2.

4th and 6th rows: With A, P2.
*P2. Sl1Pwyib. P3. Rep from * to
last st. K1.

5th and 7th rows: With A, K1.
*K3. Sl1Pwyib. K2. Rep from * to
last 2 sts. K2.

8th row: With A, as 6th row.
Rep last 8 rows for Windowpane
Pat until work from beg measures
approx 59" [150 cm], ending on a
1st row.

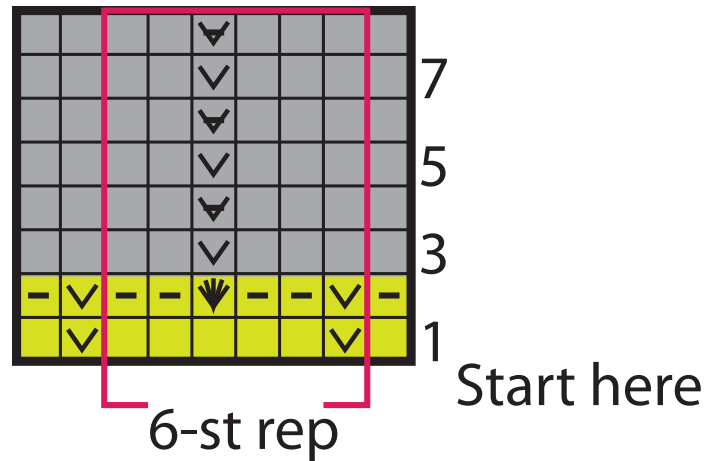
BERNAT® GRIDLINE KNIT BLANKET | KNIT

Next row: (WS). With B, K1. Sl1Pwyif. *K5. Sl1Pwyif. Rep from * to last st. K1.

With B, knit 15 rows. Cast off.

Side edging: With RS facing and B, pick up and knit 124 sts along right side edge of Blanket.

Knit 14 rows (garter st). Cast off. Rep for left side edge.



Key

- = With B, knit on RS row. Purl on WS row.
- = With B, purl on WS row. Knit on RS row.
- = With B, Sl1Pwyib on RS row. Sl1Pwyif on WS row.
- = With B, knit, wrapping yarn around needle 5 times.
- = With A, knit on RS row. Purl on WS row.
- = With A, Sl1Pwyib on RS row. Sl1Pwyif on WS row.
- = With A, Sl1Pwyif on RS row. Sl1Pwyib on WS row.